

# WISCONSIN MASTER GARDENERS ASSOCIATION



# *Welcome to the 2020 WIMGA Annual Meeting*

Introductions

Minutes of the 2019 meeting

Treasurer's Report

President's Report

Old Business

New Business: Proposed Bylaw revisions

Announcements

# WIMGA 2020 Board of Directors

Central District:  
Co)

Jackie Shaffer—Vice President (Waushara

Co)

Robynn Preston (Adams

Eastern District:

Byron Hacker—Treasurer (Calumet Co)

Doris Magyar (NEW/Brown

Co)

Northern District:

Roseann Meixelsperger (North Country)

Laurie

McGill (MGs of the North/Oneida Co)

Southeast District:

John Hahn (SEW/Milwaukee and Waukesha Co)

Nancy Jahnel-Barnes

(Racine-Kenosha Co)

Southern

(Columbia Co)

Becky Gutzman—President

Diane Kachel—Secretary

(Jefferson Co)

Western:

Hali Dessecker (Barron Co)

# Minutes of the 2019 Annual Meeting

Oct. 26, 2019 11:15 am at UW-Stevens point

President Becky Gutzman called annual meeting to order; introduced Board members.

2019 annual meeting minutes and 2019 treasurer's report were approved.

There was no old business.

The proposed bylaw amendment which would narrow the membership categories and bring them in line with risk management directives from UW-Madison, Division of Extension, was approved.

# Minutes of the 2019 Meeting, continued

- ▶ MG Program office report given by Mike Maddox
  - ▶ Update on the online reporting system (ORS)
  - ▶ Recap of volunteer hours and continuing education
- ▶ Local reps were reminded to send the president and secretary lists of officers when they change, as well as local bylaws. If any groups have an emeritus membership category, please send to president.
- ▶ An encouragement to submit articles for the WIMGA newsletter was given
- ▶ Meeting adjourned at 12:20 pm

# WIMGA Annual Treasurer's Report

Balance on hand as of September 30, 2019      \$ 52,141.06

Total Receipts  
\$15,182.30

\$ 67,323.36

Total Disbursements  
(\$31,100.15)

Balance on Hand as of November 30, 2020      \$ 36,223.21

## Account Balances

Certificates of Deposit	26,074.80
Checking Account	2,110.66
Money Market Account	<u>8,037.75</u>

# Treasurer's Report, cont.

## Disbursements to date

Annual Corp. Report

10.00

Educational Grants

16,850.00

MG Foundation

1,000.00

Mileage

374.85

National Jr. Hort. Assoc.

1,500.00

Office Expenses

109.30

Speaker Fee

100.00

WIMCA Website

# Treasurer's Report, cont.

## Receipts

Interest 357.30

Membership dues 14,825.00

**Total Receipts \$ 15,182.30**



# MG Program Office Report

## Program Staff:

Mike Maddox, Outreach Program Manager

Amy Freidig, Outreach Specialist



# Strategic Priorities

Decrease  
Confusion

Increase  
Diversity

Improve Program &  
Project Offerings

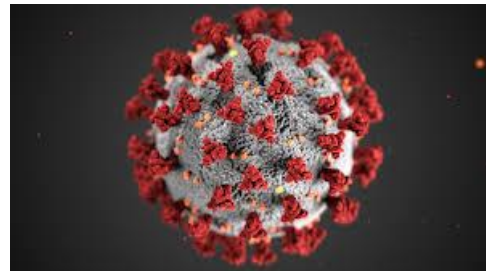


Resources &  
Staffing

Policy &  
Procedures



Icons made by [Freepik](#), [Eucalyp](#) from [www.flaticon.com](#)



# Strategic Priorities

Decrease  
Confusion



Increase  
Diversity



Improve Program &  
Project Offerings



Resources &  
Staffing



Policy &  
Procedures



## Mike's Notes

### Volunteering

- Still continuing with COVID restrictions and campus guidance into 2021
- Return to 24 hour requirement in 2021, AND going to be flexible

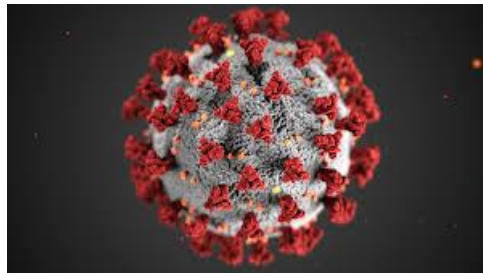
### Reporting

- Permanently moving to Jan 1 - Dec 31 for all activity reporting
- No annual report this year as in years past
- Annual enrollment begins January 1, 2021 in ORS

### Learning & Training

- Moving to Canvas (Learning Management System) in early 2021 for all continuing education (Plants Plus, others). Everyone will get account after enrollment.
- Provide access to Onboarding-Lite for all existing volunteers (10 hours CE)
- Currently piloting Foundations in Horticulture & Onboarding
- Fall 2021: Foundations in Horticulture opens statewide
- January 2022, new Onboarding opens for statewide

Icons made by [Freepik](#), [Eucalyp](#) from [www.flaticon.com](#)





# Strategic Priorities

Decrease  
Confusion



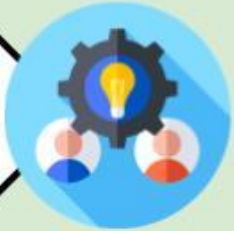
Increase  
Diversity



Improve Program &  
Project Offerings



Resources &  
Staffing



Policy &  
Procedures



## Mike's Notes

### Honored Status

- Coming in 2021 (for 2022)
- It's an award! Hours waived...

### Primary Contact

- In 2021, a primary contact person (Extension staff) must be determined for each volunteer

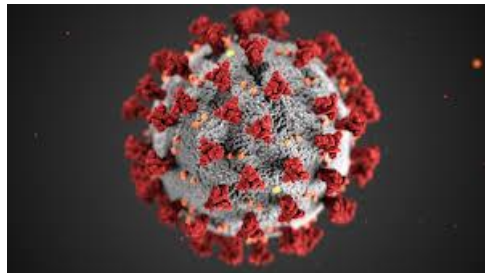
### Project Guidelines (begin in 2021)

- Guidance to align projects with MG program
- Ensure best practices for volunteer support AND risk management liability

### Association MOUs

- SLOWLY implementing in 2021
- Align with MG program
- Ensure best practices for volunteer support AND risk management liability

Icons made by [Freepik](#), [Eucalyp](#) from [www.flaticon.com](#)



# The Word for 2021:

# SCOPE

Patience  
Forgiveness



# 2020 WIMGA Accomplishments

- ▶ No host for 2019 conference, so annual meeting held in conjunction with a 1-day continuing ed opportunity
- ▶ Board meetings were held via Zoom
- ▶ Due to COVID-19 restrictions, Spring and Fall Local Rep face-to-face meetings cancelled
- ▶ Working with Extension to develop MOUs that will be required
- ▶ Thorough review of the Bylaws to reflect the way the organization is changing
- ▶ No 2020 annual conference

Old Business:

New Business: Bylaw changes as published on the WIMGA website

Adjourn...Short break

Amy Freidig, MGP Coordinator:

**Where Is the Mute Button?!... and Other Tales from the Land of Virtual Learning**